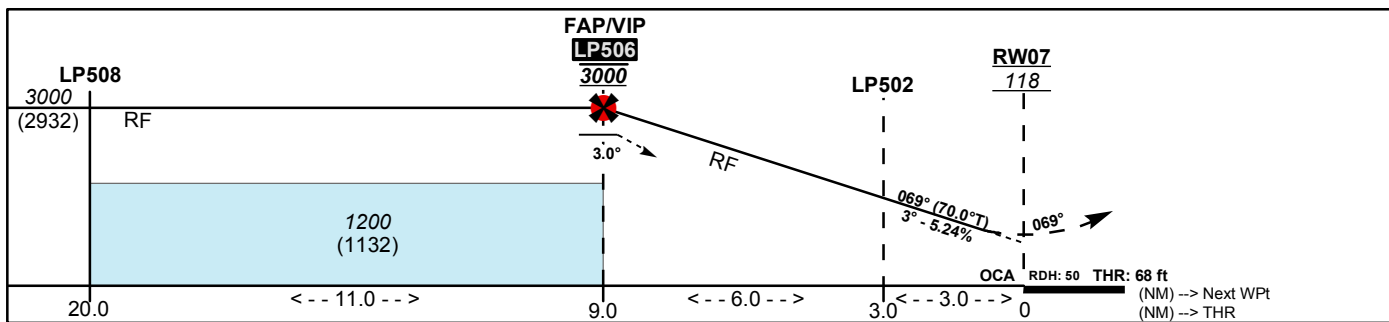
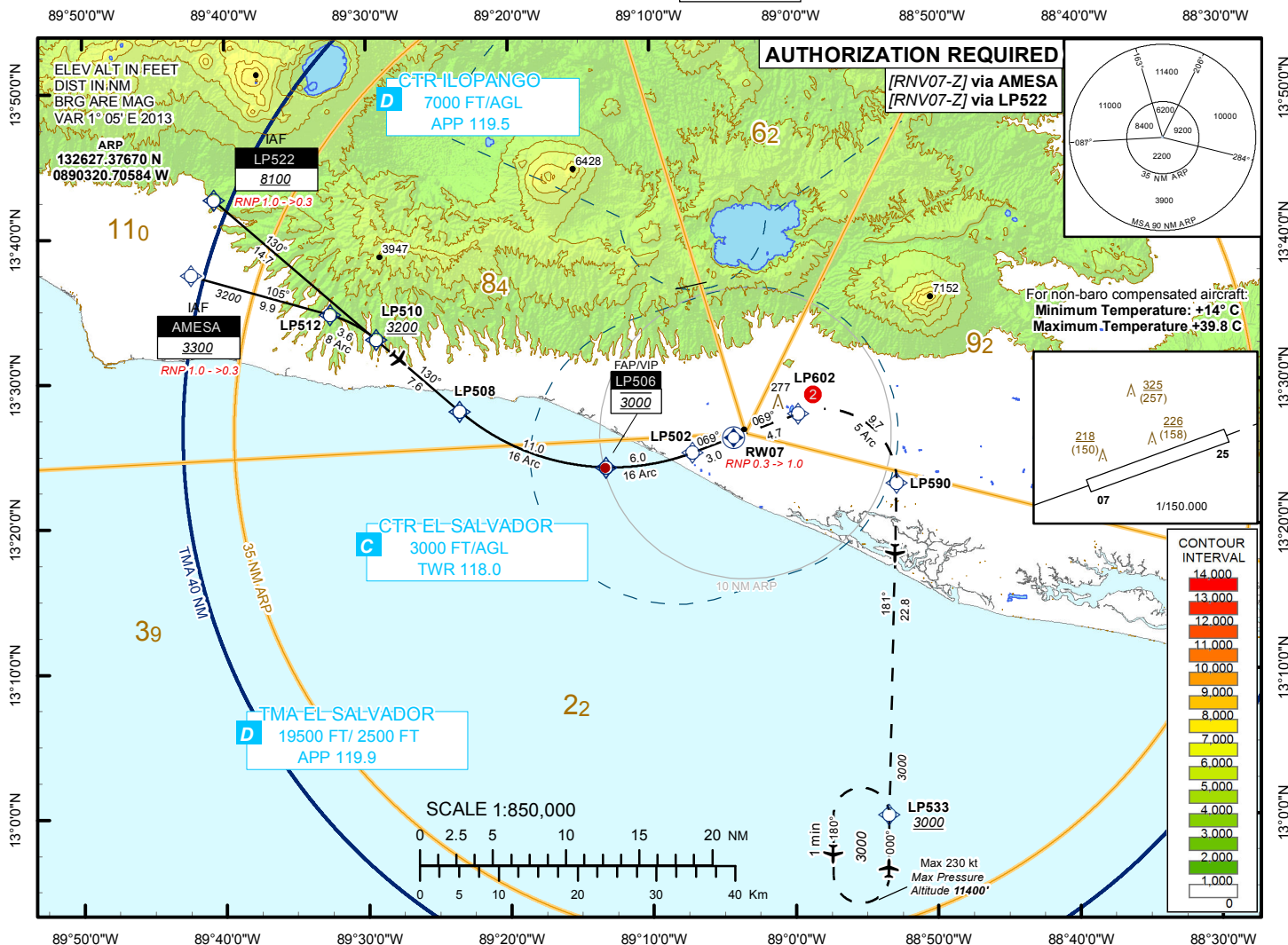


INSTRUMENT
APPROACH
CHART

AERODROME ELEV 101 ft.
HEIGHTS RELATED TO
THR RWY 07 ELEV 68 ft.

ATIS 127.6
APP 119.9
TWR 118.0

EL SALVADOR / EL SALVADOR INTL
RNAV (RNP) Z RWY 07



AD minima: Altitude and Height in feet. REF HGT: THR ELEV.

CAT	M.A. Climb Gradient: 2.5% 152 FT/NM				MISSED APPROACH			
	RNP AR FINAL 0.3				1. Climb to 3000 via the RNAV (RNP) missed approach track to LP533.			
	MA RNP 1.0		MA RNP 0.3 ②		2. At LP533 hold or start a new approach via LP533			
	OCA (H)	DA (H)	OCA (H)	DA (H)	CAT	Ceiling	Visibility	ALS OUT Ceiling - Visibility
A	369 (301)	370 (302)	348 (280)	350 (282)	A	300'	800m	300' - 1600m
B	391 (323)	400 (332)	360 (292)	360 (292)	B	300'	800m	300' - 1600m
C	409 (341)	410 (342)	368 (300)	370 (302)	C	300'	800m	300' - 1600m
D	428 (360)	430 (362)	379 (311)	380 (312)	D	300'	1 600m	300' - 1600m

② RNP 0.3 is required until LP602.

Designator	Path Descriptor	Fix Identifier (Waypoint Name)	Latitude	Longitude	Flyover	Fix Role	Course °M	Turn Direction	Altitude (ft)	Distance (Nm)	Speed Limit (Kt)	Magnetic Variation	Vertical Angle	Navigation Performance	Radius (NM)	Arc Center Fix
RNAV RNP Z RWY 07	IF	LP522	134242.3230N	0894044.2790W		IAF			+8100			1°.05'E		RNP 1.0		
RNAV RNP Z RWY 07	TF	LP510	133303.0070N	0892919.4890W			130		+3200	14.7		1°.05'E		RNP 0.3		
RNAV RNP Z RWY 07	TF	LP508	132804.8910N	0892327.6990W			130			7.6		1°.05'E		RNP 0.3		
RNAV RNP Z RWY 07	RF	LP506	132409.5690N	0891309.3040W			091	L	@3000	11.0		1°.05'E		RNP 0.3	16.0	LPC50 134013.4070N 0891242.0440W
Designator	Path Descriptor	Fix Identifier (Waypoint Name)	Latitude	Longitude	Flyover	Fix Role	Course °M	Turn Direction	Altitude (ft)	Distance (Nm)	Speed Limit (Kt)	Magnetic Variation	Vertical Angle	Navigation Performance	Radius (NM)	Arc Center Fix
RNAV RNP Z RWY 07	IF	AMESA	133728.7300N	0894221.5300W		IAF			+3300			1°.05'E		RNP 1.0		
RNAV RNP Z RWY 07	TF	LP512	133445.9470N	0893234.3970W			105			9.9		1°.05'E		RNP 0.3		
RNAV RNP Z RWY 07	RF	LP510	133303.0070N	0892919.4890W			130	R	+3200	3.6		1°.05'E		RNP 0.3	8.3	LPC51 132644.8440N 0893453.8940W
RNAV RNP Z RWY 07	TF	LP508	132804.8910N	0892327.6990W			130			7.6		1°.05'E		RNP 0.3		
RNAV RNP Z RWY 07	RF	LP506	132409.5690N	0891309.3040W			091	L	@3000	11.0		1°.05'E		RNP 0.3	16.0	LPC50 134013.4070N 0891242.0440W
Designator	Path Descriptor	Fix Identifier (Waypoint Name)	Latitude	Longitude	Flyover	Fix Role	Course °M	Turn Direction	Altitude (ft)	Distance (Nm)	Speed Limit (Kt)	Magnetic Variation	Vertical Angle	Navigation Performance	Radius (NM)	Arc Center Fix
RNAV RNP Z RWY 07	IF	LP506	132409.5690N	0891309.3040W		FAF			@3000			1°.05'E		RNP 0.3		
RNAV RNP Z RWY 07	RF	LP502	132507.6270N	0890704.1990W			069	L		6.0		1°.05'E	-3.000	RNP 0.3	16.0	LPC50 134013.4070N 0891242.0440W
RNAV RNP Z RWY 07	TF	RW07	132609.5550N	0890410.6790W	Y	MAPT	069		@118	3.0		1°.05'E	-3.000	RNP 0.3		
Designator	Path Descriptor	Fix Identifier (Waypoint Name)	Latitude	Longitude	Flyover	Fix Role	Course °M	Turn Direction	Altitude (ft)	Distance (Nm)	Speed Limit (Kt)	Magnetic Variation	Vertical Angle	Navigation Performance	Radius (NM)	Arc Center Fix
RNAV RNP Z RWY 07	TF	RW07	132609.5550N	0890410.6790W	Y	MAPT	069		@118	3.0		1°.05'E	-3.000	RNP 0.3		
RNAV RNP Z RWY 07	TF	LP602	132747.0810N	0885937.1770W			069			4.7		1°.05'E		RNP 1.0		
RNAV RNP Z RWY 07	RF	LP590	132255.0310N	0885244.2390W			181	R		9.7		1°.05'E		RNP 1.0	5.0	LPC05 132303.9440N 0885751.8710W
RNAV RNP Z RWY 07	TF	LP533	130001.7800N	0885325.9250W			181		+3000	22.8		1°.05'E		RNP 1.0		
RNAV RNP Z RWY 07	HM	LP533	130001.7800N	0885325.9250W			000	L	+3000		230.00 KT	1°.05'E		NA		