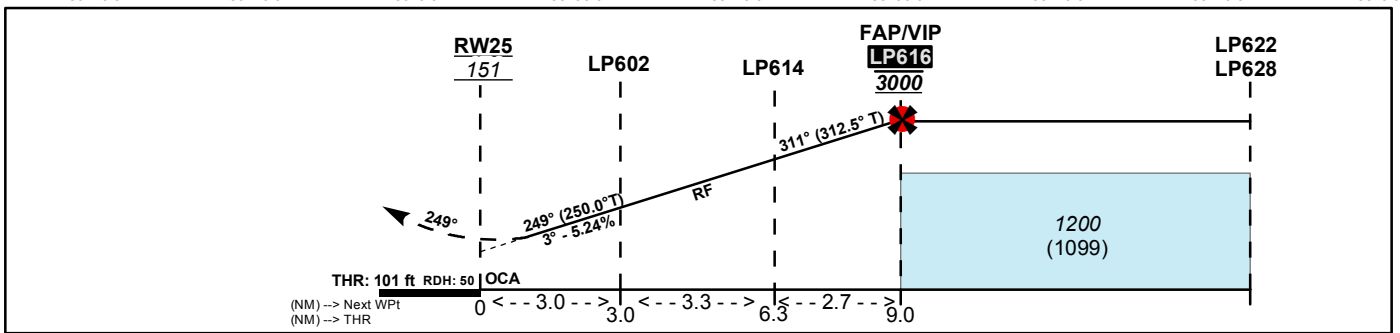
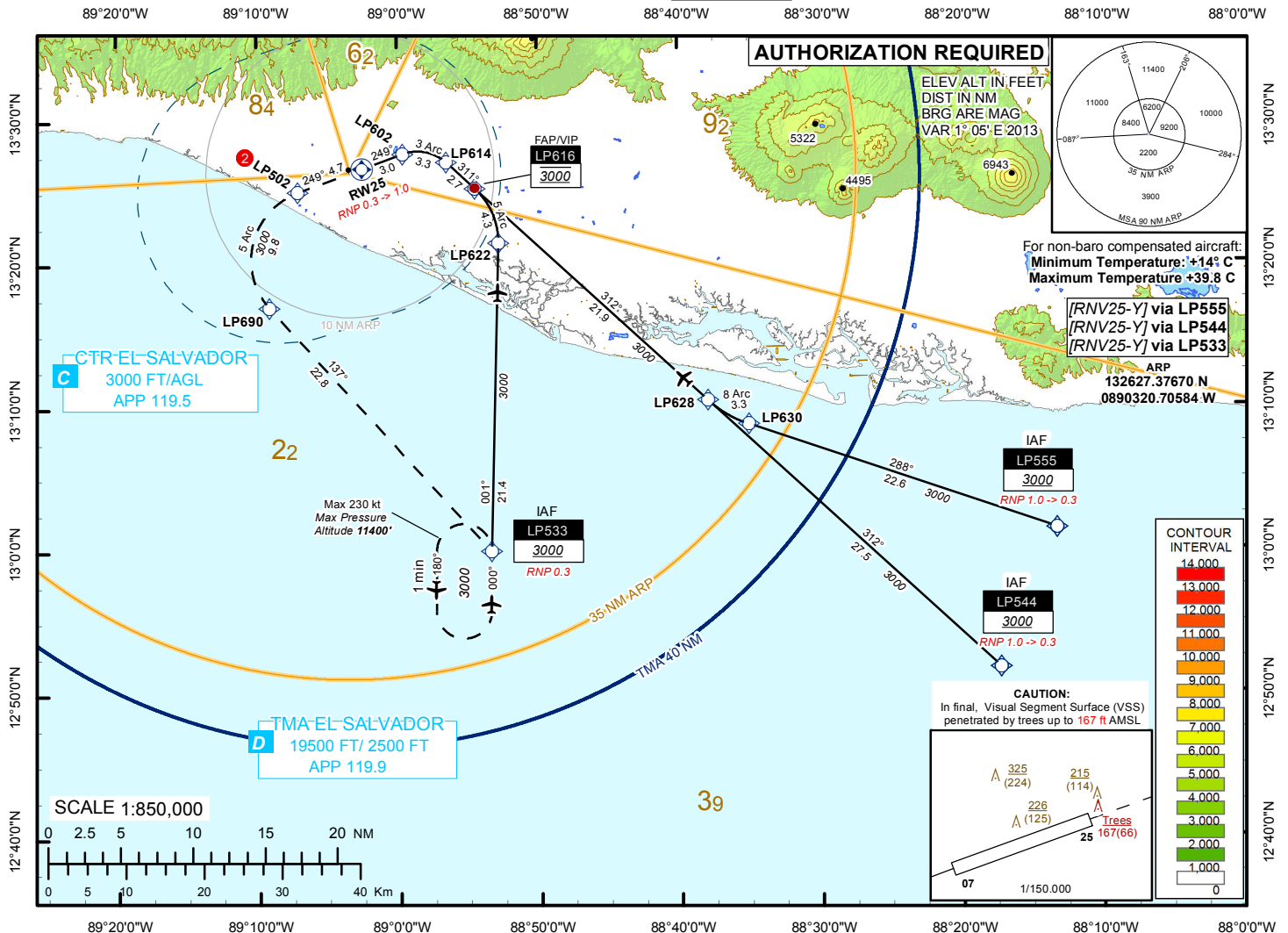


INSTRUMENT
APPROACH
CHART

AERODROME ELEV 101 ft.
HEIGHTS RELATED TO
THR RWY 25 ELEV 101 ft.

ATIS 127.6
APP 119.9
TWR 118.0

EL SALVADOR / EL SALVADOR INTL
RNAV (RNP) Y RWY 25



AD minima: Altitude and Height in feet.					REF HGT: THR ELEV.		
CAT	M.A. Climb Gradient: 2.5% 152 FT/NM				MISSED APPROACH 1. Climb to 3000 via the RNAV (RNP) missed approach track to LP533. 2. At LP533 hold or start a new approach via LP533 3. 2 RNP 0.3 is required until LP502.		
	RNP AR FINAL 0.3						
	MA RNP 1.0		MA RNP 0.3 2				
	OCA (H)	DA (H)	OCA (H)	DA (H)	CAT	Ceiling	Visibility
A	374 (273)	380 (279)	348 (247)	350 (249)	A	400'	1 600m
B	395 (294)	400 (299)	357 (256)	360 (259)	B	400'	1 600m
C	414 (313)	420 (319)	365 (264)	370 (269)	C	400'	1 600m
D	433 (332)	440 (339)	376 (275)	380 (279)	D	400'	1 600m

Designator	Path Descriptor	Fix Identifier (Waypoint Name)	Latitude	Longitude	Flyover	Fix Role	Course °M	Turn Direction	Altitude (ft)	Distance (Nm)	Speed Limit (Kt)	Magnetic Variation	Vertical Angle	Navigation Performance	Radius (NM)	Arc Center Fix
RNAV RNP Y RWY 25	IF	LP555	130128.5740N	0881308.7950W		IAF			+3000			1°05'E		RNP 1.0		
RNAV RNP Y RWY 25	TF	LP630	130848.4480N	0883502.3420W			288			22.6		1°05'E		RNP 0.3		
RNAV RNP Y RWY 25	RF	LP628	131029.9430N	0883756.7120W			312	R		3.3		1°05'E		RNP 0.3	8.0	LPC72 131624.7760N 0883223.5610W
RNAV RNP Y RWY 25	TF	LP616	132521.7400N	0885428.0850W			312		@3000	21.9		1°05'E		RNP 0.3		
Designator	Path Descriptor	Fix Identifier (Waypoint Name)	Latitude	Longitude	Flyover	Fix Role	Course °M	Turn Direction	Altitude (ft)	Distance (Nm)	Speed Limit (Kt)	Magnetic Variation	Vertical Angle	Navigation Performance	Radius (NM)	Arc Center Fix
RNAV RNP Y RWY 25	IF	LP544	125146.8640N	0881712.7560W		IAF			+3000			1°05'E		RNP 1.0		
RNAV RNP Y RWY 25	TF	LP628	131029.9430N	0883756.7120W			312			27.5		1°05'E		RNP 0.3		
RNAV RNP Y RWY 25	TF	LP616	132521.7400N	0885428.0850W			312		@3000	21.9		1°05'E		RNP 0.3		
Designator	Path Descriptor	Fix Identifier (Waypoint Name)	Latitude	Longitude	Flyover	Fix Role	Course °M	Turn Direction	Altitude (ft)	Distance (Nm)	Speed Limit (Kt)	Magnetic Variation	Vertical Angle	Navigation Performance	Radius (NM)	Arc Center Fix
RNAV RNP Y RWY 25	IF	LP616	132521.7400N	0885428.0850W		FAF			@3000			1°05'E		RNP 0.3		
RNAV RNP Y RWY 25	TF	LP614	132710.4440N	0885629.1490W			311			2.7		1°05'E	-3.000	RNP 0.3		
RNAV RNP Y RWY 25	RF	LP602	132747.0810N	0885937.1770W			249	L		3.3		1°05'E	-3.000	RNP 0.3	3.0	LPC70 132457.2010N 0885833.9850W
RNAV RNP Y RWY 25	TF	RW25	132645.2050N	0890230.7360W	Y	MAPT	249		@151	3.0		1°05'E	-3.000	RNP 0.3		
Designator	Path Descriptor	Fix Identifier (Waypoint Name)	Latitude	Longitude	Flyover	Fix Role	Course °M	Turn Direction	Altitude (ft)	Distance (Nm)	Speed Limit (Kt)	Magnetic Variation	Vertical Angle	Navigation Performance	Radius (NM)	Arc Center Fix
RNAV RNP Y RWY 25	TF	RW25	132645.2050N	0890230.7360W	Y	MAPT	249		@151	3.0		1°05'E	-3.000	RNP 0.3		
RNAV RNP Y RWY 25	TF	LP502	132507.6270N	0890704.1990W			249			4.7		1°05'E		RNP 1.0		
RNAV RNP Y RWY 25	RF	LP690	131702.4380N	0890906.9720W			137	L		9.8		1°05'E		RNP 1.0	5.0	LPC69 132024.5410N 0890518.7670W
RNAV RNP Y RWY 25	TF	LP533	130001.7800N	0885325.9250W			137		+3000	22.8		1°05'E		RNP 1.0		
RNAV RNP Y RWY 25	HM	LP533	130001.7800N	0885325.9250W			000	L	+3000		230.00 KT	1°05'E		NA		
Designator	Path Descriptor	Fix Identifier (Waypoint Name)	Latitude	Longitude	Flyover	Fix Role	Course °M	Turn Direction	Altitude (ft)	Distance (Nm)	Speed Limit (Kt)	Magnetic Variation	Vertical Angle	Navigation Performance	Radius (NM)	Arc Center Fix
RNAV RNP Y RWY 25	TF	LP533	130001.7800N	0885325.9250W		IAF	137		+3000	22.8		1°05'E		RNP 0.3		
RNAV RNP Y RWY 25	TF	LP622	132131.1680N	0885248.5150W			001			21.4		1°05'E		RNP 0.3		
RNAV RNP Y RWY 25	RF	LP616	132521.7400N	0885428.0850W			311	L	@3000	4.200		1°05'E		RNP 0.3	5.0	LPC71 132139.6860N 0885756.1290W
RNAV RNP Y RWY 25	IF	LP616	132521.7400N	0885428.0850W		FAF			@3000			1°05'E		RNP 0.3		
RNAV RNP Y RWY 25	TF	LP614	132710.4440N	0885629.1490W			311			2.7		1°05'E	-3.000	RNP 0.3		
RNAV RNP Y RWY 25	RF	LP602	132747.0810N	0885937.1770W			249	L		3.3		1°05'E	-3.000	RNP 0.3	3.0	LPC70 132457.2010N 0885833.9850W
RNAV RNP Y RWY 25	TF	RW25	132645.2050N	0890230.7360W	Y	MAPT	249		@151	3.0		1°05'E	-3.000	RNP 0.3		