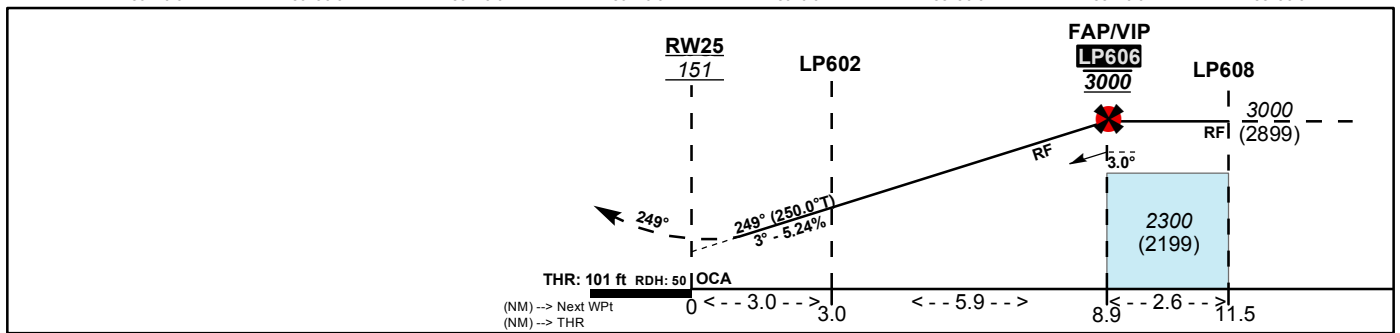
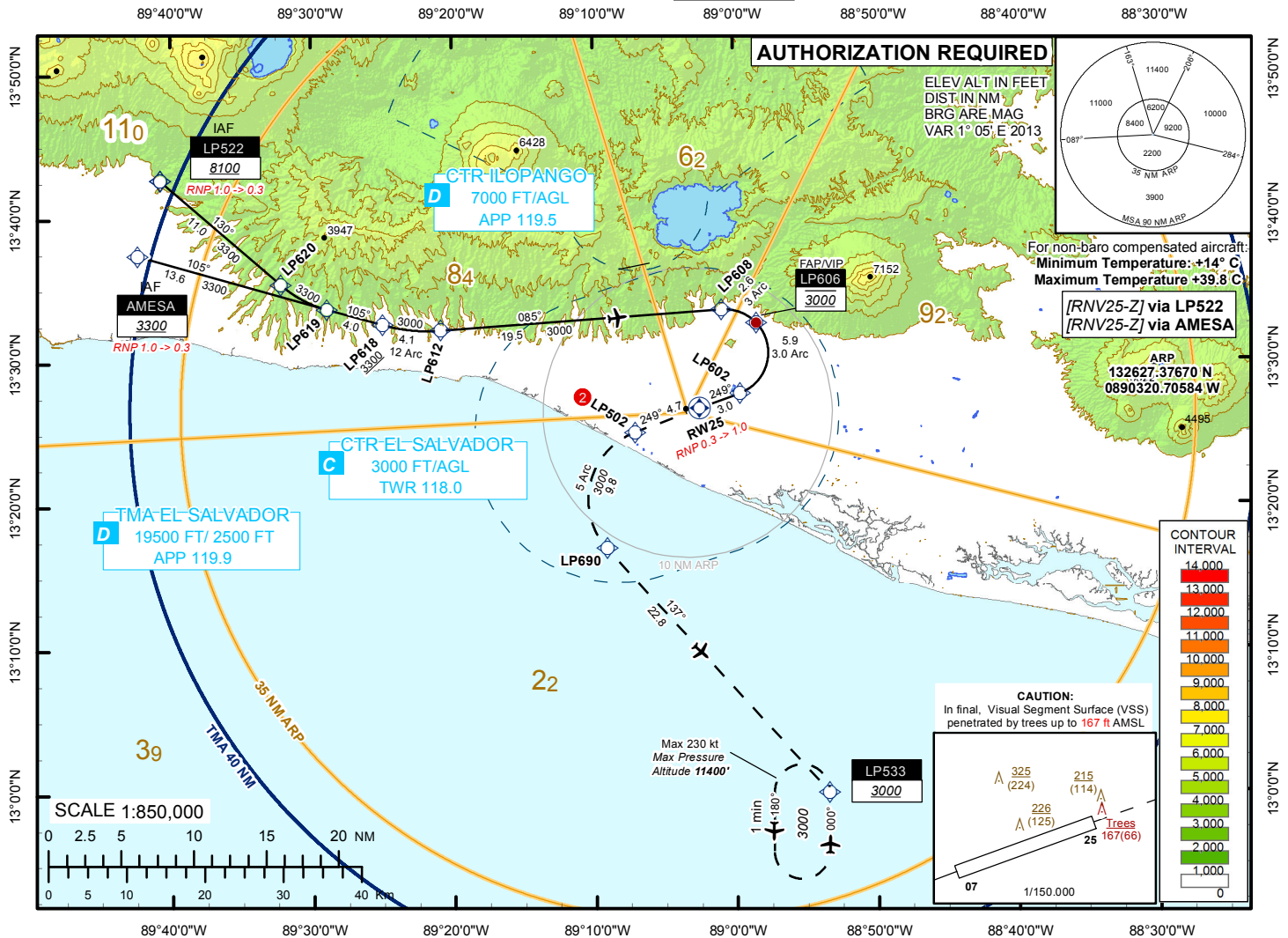


INSTRUMENT
APPROACH
CHART

AERODROME ELEV 101 ft.
HEIGHTS RELATED TO
THR RWY 25 ELEV 101 ft.

ATIS 127.6
APP 119.9
TWR 118.0

EL SALVADOR / EL SALVADOR INTL
RNAV (RNP) Z RWY 25



AD minima: Altitude and Height in feet. REF HGT: THR ELEV.

CAT	M.A. Climb Gradient: 2.5% 152 FT/NM				MISSED APPROACH		
	RNP AR FINAL 0.3						
	MA RNP 1.0		MA RNP 0.3 ②		CAT	Ceiling	Visibility
	OCA (H)	DA (H)	OCA (H)	DA (H)			
A	374 (273)	380 (279)	348 (247)	350 (249)	A	400'	1 600m
B	395 (294)	400 (299)	357 (256)	360 (259)	B	400'	1 600m
C	414 (313)	420 (319)	365 (264)	370 (269)	C	400'	1 600m
D	433 (332)	440 (339)	376 (275)	380 (279)	D	400'	1 600m

② RNP 0.3 is required until LP502.

Designator	Path Descriptor	Fix Identifier (Waypoint Name)	Latitude	Longitude	Flyover	Fix Role	Course °M	Turn Direction	Altitude (ft)	Distance (Nm)	Speed Limit (Kt)	Magnetic Variation	Vertical Angle	Navigation Performance	Radius (NM)	Arc Center Fix
RNAV RNP Z RWY 25	IF	AMESA	133728.7300N	0894221.5300W		IAF			+3300			1°.05'E		RNP 1.0		
RNAV RNP Z RWY 25	TF	LP619	133345.3200N	0892856.1330W			105			13.6		1°.05'E		RNP 0.3		
RNAV RNP Z RWY 25	TF	LP618	133239.4680N	0892459.3120W			105		+3300	4.0		1°.05'E		RNP 0.3		
RNAV RNP Z RWY 25	RF	LP612	133214.3320N	0892050.3440W			085	L		4.1		1°.05'E		RNP 0.3	11.7	LPC68 134358.2900N 0892141.8480W
RNAV RNP Z RWY 25	TF	LP608	133337.3020N	0890053.3250W			085			19.5		1°.05'E		RNP 0.3		
RNAV RNP Z RWY 25	RF	LP606	133241.3900N	0885826.3530W			135	R	@3000	2.6		1°.05'E		RNP 0.3	3.0	LPC66 133036.9560N 0890040.3940W
Designator	Path Descriptor	Fix Identifier (Waypoint Name)	Latitude	Longitude	Flyover	Fix Role	Course °M	Turn Direction	Altitude (ft)	Distance (Nm)	Speed Limit (Kt)	Magnetic Variation	Vertical Angle	Navigation Performance	Radius (NM)	Arc Center Fix
RNAV RNP Z RWY 25	IF	LP522	134242.3230N	0894044.2790W		IAF			+8100			1°.05'E		RNP 1.0		
RNAV RNP Z RWY 25	TF	LP620	133528.2650N	0893211.0480W			130			11.0		1°.05'E		RNP 0.3		
RNAV RNP Z RWY 25	RF	LP619	133345.3200N	0892856.1330W			105	L		3.6		1°.05'E		RNP 0.3	8.3	LPC67 134146.3620N 0892636.3670W
RNAV RNP Z RWY 25	TF	LP618	133239.4680N	0892459.3120W			105		+3300	4.0		1°.05'E		RNP 0.3		
RNAV RNP Z RWY 25	RF	LP612	133214.3320N	0892050.3440W			085	L		4.1		1°.05'E		RNP 0.3	11.7	LPC68 134358.2900N 0892141.8480W
RNAV RNP Z RWY 25	TF	LP608	133337.3020N	0890053.3250W			085			19.5		1°.05'E		RNP 0.3		
RNAV RNP Z RWY 25	RF	LP606	133241.3900N	0885826.3530W			135	R	@3000	6.9		1°.05'E		RNP 0.3	3.0	LPC66 133036.9560N 0890040.3940W
Designator	Path Descriptor	Fix Identifier (Waypoint Name)	Latitude	Longitude	Flyover	Fix Role	Course °M	Turn Direction	Altitude (ft)	Distance (Nm)	Speed Limit (Kt)	Magnetic Variation	Vertical Angle	Navigation Performance	Radius (NM)	Arc Center Fix
RNAV RNP Z RWY 25	IF	LP606	133241.3900N	0885826.3530W		FAF			@3000			1°.05'E		RNP 0.3		
RNAV RNP Z RWY 25	RF	LP602	132747.0810N	0885937.1770W			249	R		5.9		1°.05'E	-3.000	RNP 0.3	3.0	LPC66 133036.9560N 0890040.3940W
RNAV RNP Z RWY 25	TF	RW25	132645.2050N	0890230.7360W	Y	MAPT	249		@151	3.0		1°.05'E	-3.000	RNP 0.3		
Designator	Path Descriptor	Fix Identifier (Waypoint Name)	Latitude	Longitude	Flyover	Fix Role	Course °M	Turn Direction	Altitude (ft)	Distance (Nm)	Speed Limit (Kt)	Magnetic Variation	Vertical Angle	Navigation Performance	Radius (NM)	Arc Center Fix
RNAV RNP Z RWY 25	TF	RW25	132645.2050N	0890230.7360W	Y	MAPT	249		@151	3.0		1°.05'E	-3.000	RNP 0.3		
RNAV RNP Z RWY 25	TF	LP502	132507.6270N	0890704.1990W			249			4.7		1°.05'E		RNP 1.0		
RNAV RNP Z RWY 25	RF	LP690	131702.4380N	0890906.9720W			137	L		9.8		1°.05'E		RNP 1.0	5.0	LPC69 132024.5410N 0890518.7670W
RNAV RNP Z RWY 25	TF	LP533	130001.7800N	0885325.9250W			137		+3000	22.8		1°.05'E		RNP 1.0		
RNAV RNP Z RWY 25	HM	LP533	130001.7800N	0885325.9250W			000	L	+3000		230.00 KT	1°.05'E		NA		