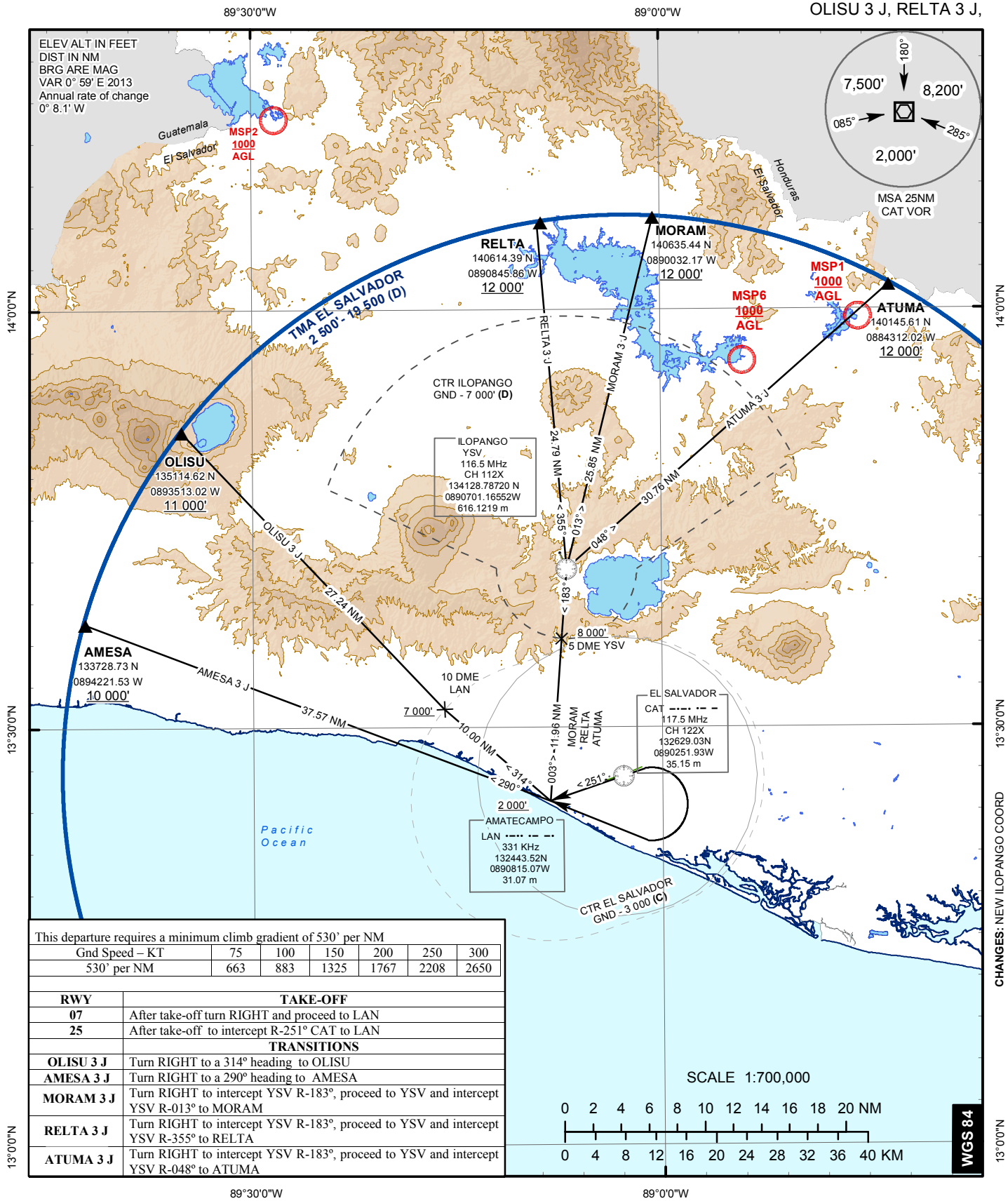


STANDARD DEPARTURE CHART -
INSTRUMENT (SID)

TRANSITION ALTITUDE
19500 Ft.

APP 119.9
TWR 118.0

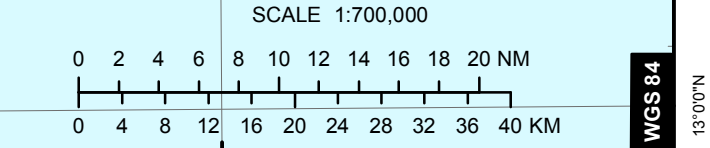
EL SALVADOR / EL SALVADOR INTL
MONSEÑOR OSCAR ARNULFO ROMERO
RWY 07/25
AMESA 3 J, ATUMA 3 J, MORAM 3 J,
OLISU 3 J, RELTA 3 J,



This departure requires a minimum climb gradient of 530' per NM

Gnd Speed - KT	75	100	150	200	250	300
530' per NM	663	883	1325	1767	2208	2650

RWY	TAKE-OFF
07	After take-off turn RIGHT and proceed to LAN
25	After take-off to intercept R-251° CAT to LAN
TRANSITIONS	
OLISU 3 J	Turn RIGHT to a 314° heading to OLISU
AMESA 3 J	Turn RIGHT to a 290° heading to AMESA
MORAM 3 J	Turn RIGHT to intercept YSV R-183°, proceed to YSV and intercept YSV R-013° to MORAM
RELTA 3 J	Turn RIGHT to intercept YSV R-183°, proceed to YSV and intercept YSV R-355° to RELTA
ATUMA 3 J	Turn RIGHT to intercept YSV R-183°, proceed to YSV and intercept YSV R-048° to ATUMA



INTENTIONALLY LEFT BLANK