

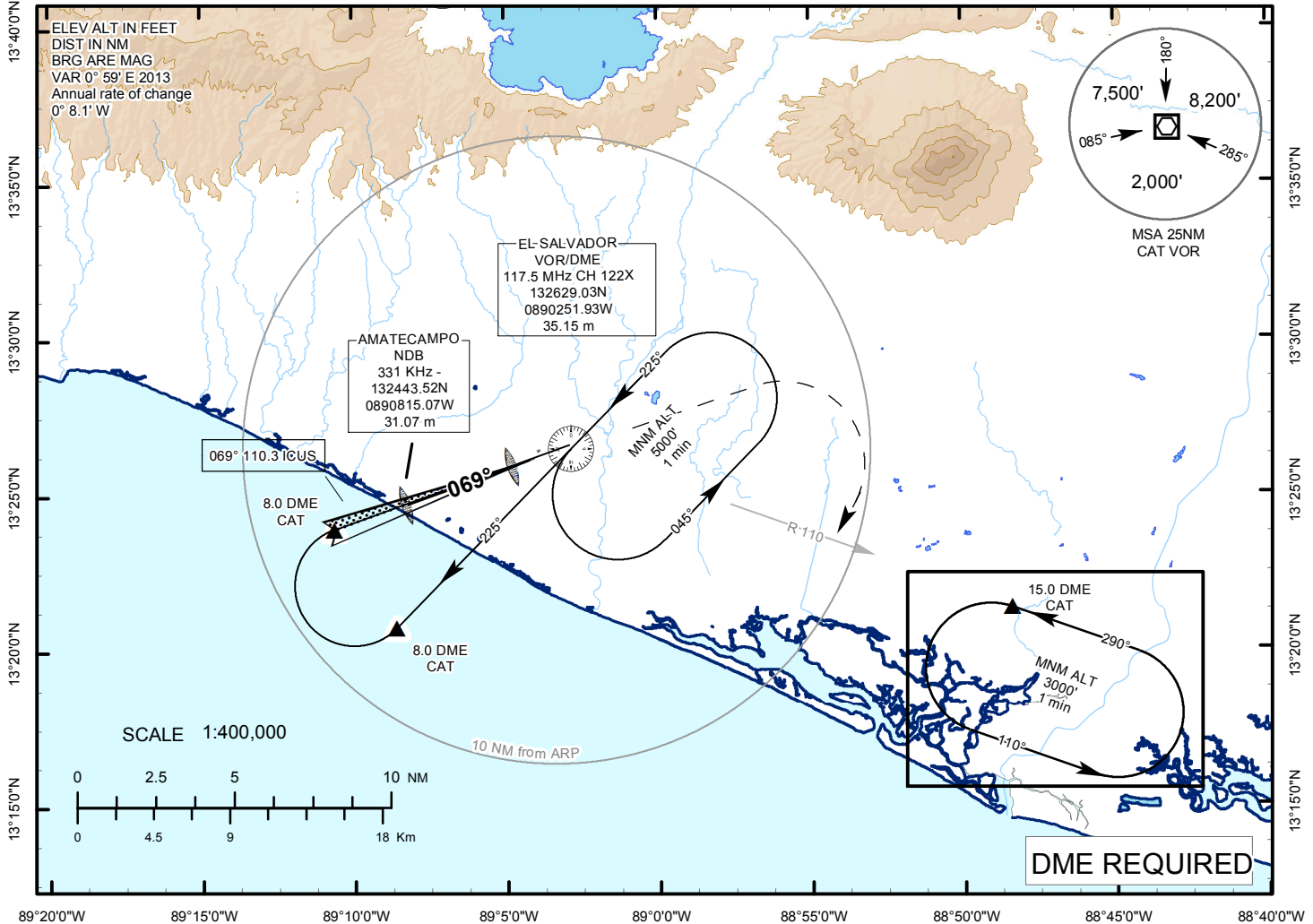
INSTRUMENT  
APPROACH  
CHART

AERODROME ELEV 101 ft.  
HEIGHTS RELATED TO  
TDZE RWY 07 ELEV 78 ft.

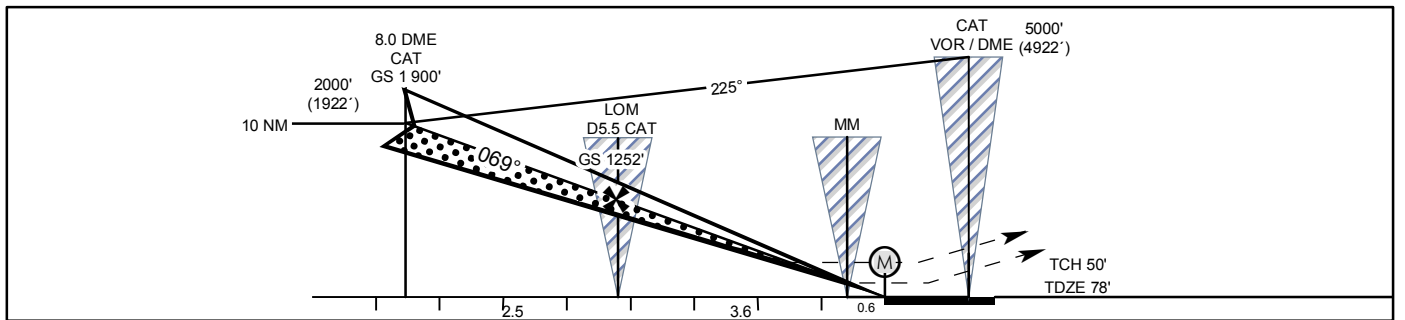
ATIS 127.6  
APP 119.9  
TWR 118.0

EL SALVADOR / EL SALVADOR INTL  
MONSEÑOR OSCAR ARNULFO ROMERO  
ILS X RWY 07

89°20'0"W 89°15'0"W 89°10'0"W 89°5'0"W 89°0'0"W 88°55'0"W 88°50'0"W 88°45'0"W 88°40'0"W



89°20'0"W 89°15'0"W 89°10'0"W 89°5'0"W 89°0'0"W 88°55'0"W 88°50'0"W 88°45'0"W 88°40'0"W



Rate of Descend	GS (VELOCITY)	70	90	100	120	140	160	MISSED APCH: Climb on hdg 069° until reaching 500' then climbing right turn to 3 000' outbound via CAT VOR R-110 and hold at D15.0 or Request ATC instructions.	
	Ft/min GS 2.5°	315	405	450	539	629	719		
MAPT - THR	Min	NA	NA	NA	NA	NA	NA		
Straight in Approach	ILS DA(H)278' (200')			LOC (GS OUT) MDA (H) 340' (262')				MAX Kts	CIRCLE TO LAND
	Ceiling - Visibility								
CAT	FULL	ALS OUT			ALS OUT				
A							90	MDA(H) 520' (419')	Ceiling - Visibility 500' - 1 600 m
B							120		
C	200' - 800 m	200' - 1 200 m	300' - 800 m		300' - 1 600 m		140	560' (459')	500' - 2 400 m
D			300' - 1 200 m				165	660' (559')	600' - 3 200 m

**INTENTIONALLY LEFT BLANK**