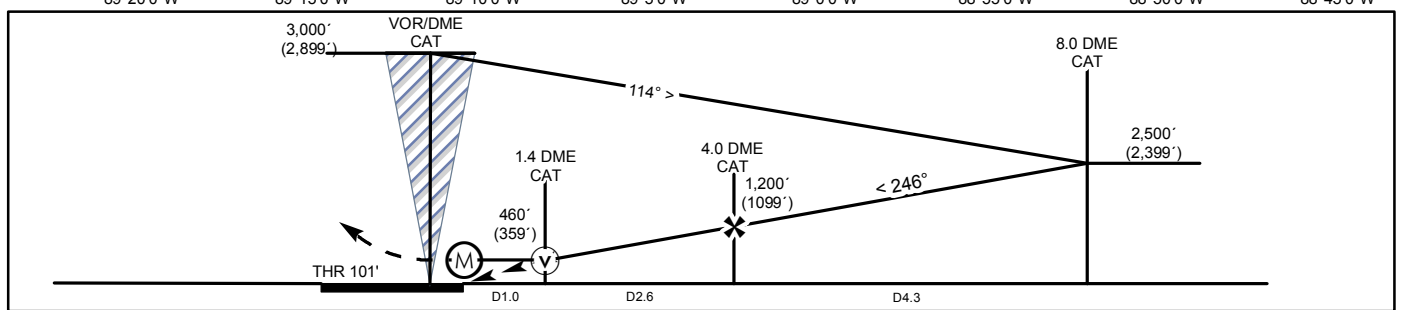
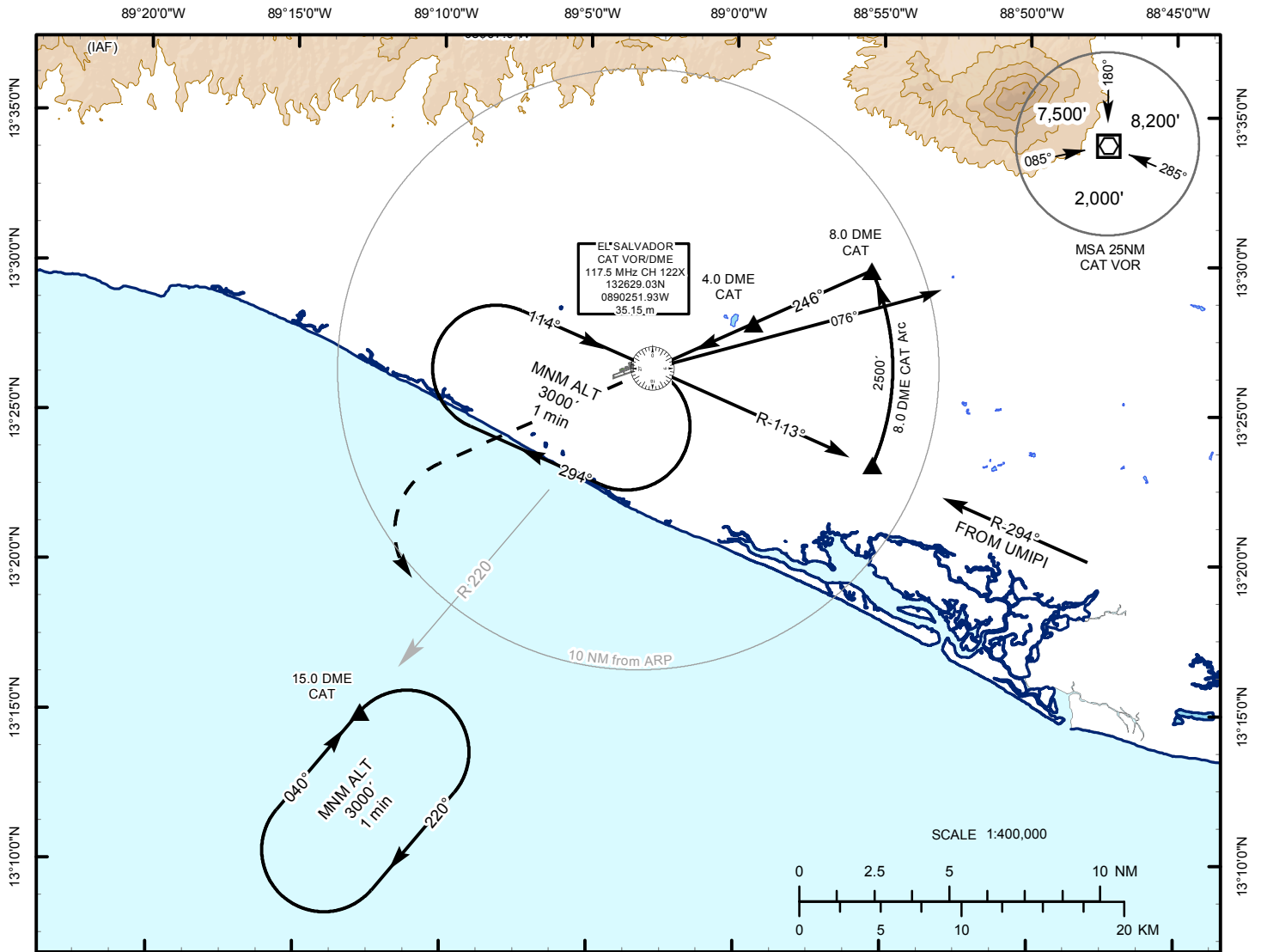


INSTRUMENT
APPROACH
CHART

AERODROME ELEV 101 ft.
HEIGHTS RELATED TO
THR RWY 25 ELEV 101 ft.

ATIS 127.6
APP 119.9
TWR 118.0

EL SALVADOR / EL SALVADOR INTL
MONSEÑOR OSCAR ARNULFO ROMERO
VOR/DME Y RWY25



Rate of Descent 5.2% (3°)	GS (VELOCITY)	70	90	100	120	140	165	MISSED APCH: Climb on hdg 246° until reaching 1 200' then climbing left turn to 3 000' outbound via CAT VOR R-220 and hold at D15.0 or Request ATC instructions.
	FAF to MAPT	3:10	2:27	2:13	1:51	1:35	1:20	
Straight in Approach MDA (H) 460' (359')								
CAT	Ceiling - Visibility		MAX Kts	CIRCLE TO LAND				
				MDA(H)	Ceiling - Visibility			
A	400' - 1 600 m		90	520' (419')	500' - 1 600 m			
B			120	560' (459')				
C			140	500' - 2 400 m				
D			165	660' (559')	600' - 3 200 m			

INTENTIONALLY LEFT BLANK