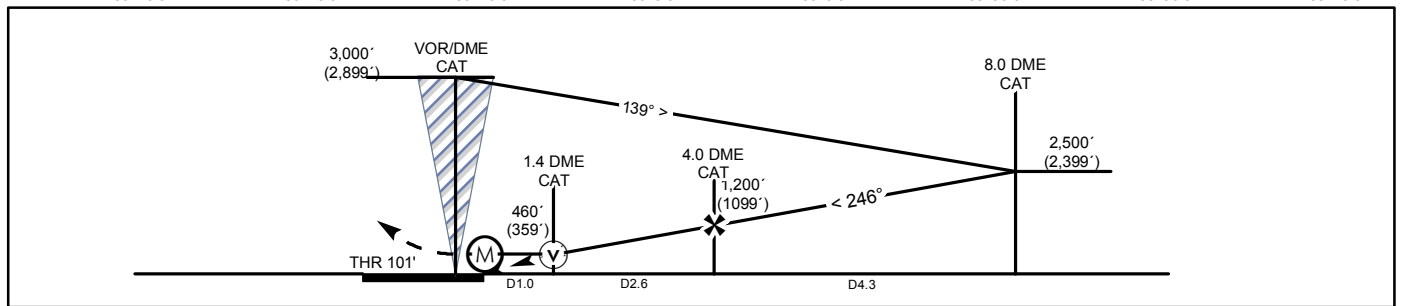
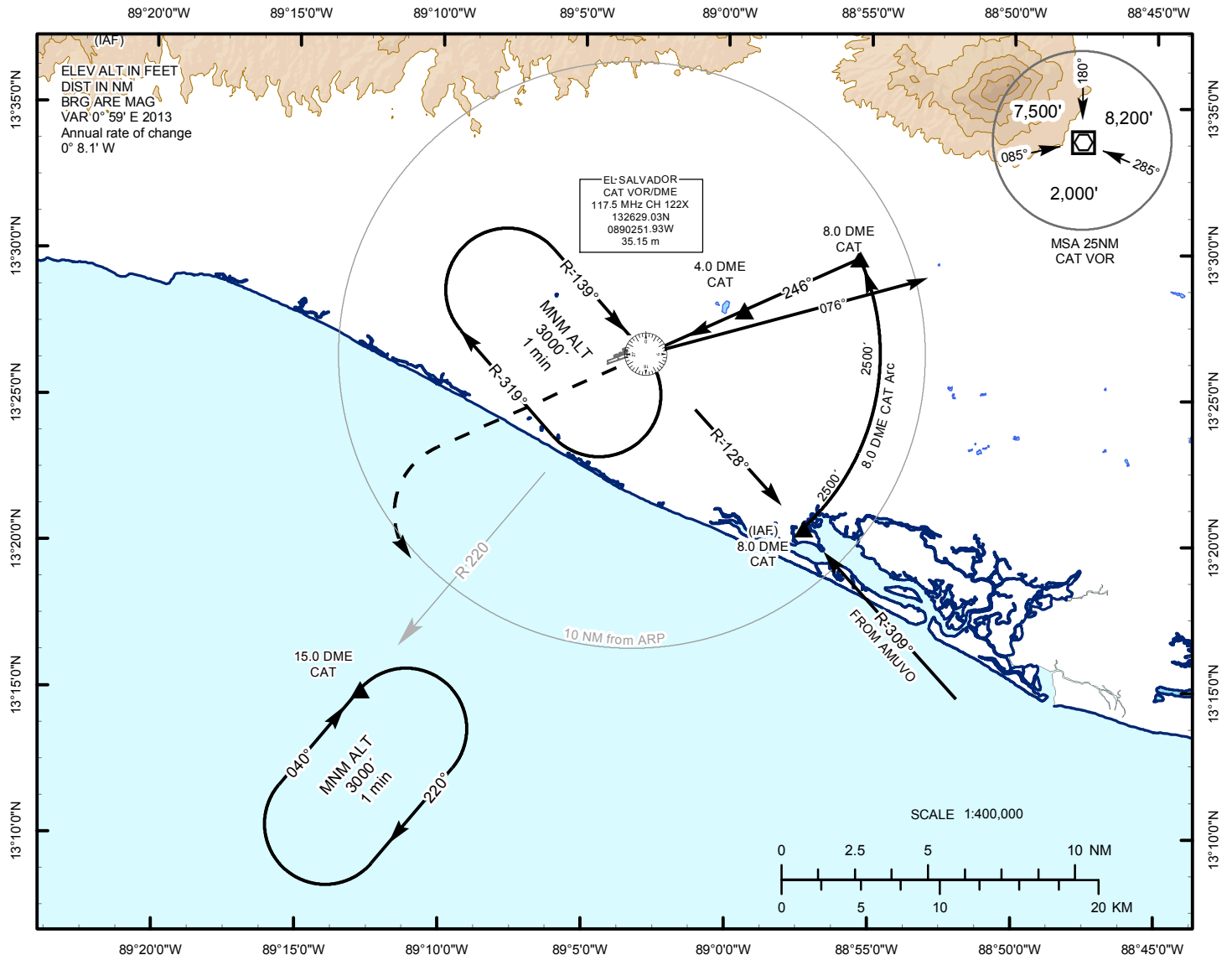


INSTRUMENT
APPROACH
CHART

AERODROME ELEV 101 ft.
HEIGHTS RELATED TO
THR RWY 25 ELEV 101 ft.

ATIS 127.6
APP 119.9
TWR 118.0

EL SALVADOR / EL SALVADOR INTL
MONSEÑOR OSCAR ARNULFO ROMERO
VOR/DME Z RWY25



Rate of Descend 5.2% (3°)	GS (VELOCITY)	70	90	100	120	140	165	MISSED APCH: Climb on hdg 246° until reaching 1 200' then climbing left turn to 3 000' outbound via CAT VOR R-220 and hold at D15.0 or Request ATC instructions.		
	FAF to MAPT	3:10	2:27	2:13	1:51	1:35	1:20			
Straight in Approach MDA (H) 460' (359')								MAX Kts	CIRCLE TO LAND	
CAT	Ceiling - Visibility						MDA(H)		Ceiling - Visibility	
A	400' - 1 600 m						90	520' (419')	500' - 1 600 m	
B							120	560' (459')		
C							140	600' (559')	500' - 2 400 m	
D							165	660' (559')		

INTENTIONALLY LEFT BLANK