

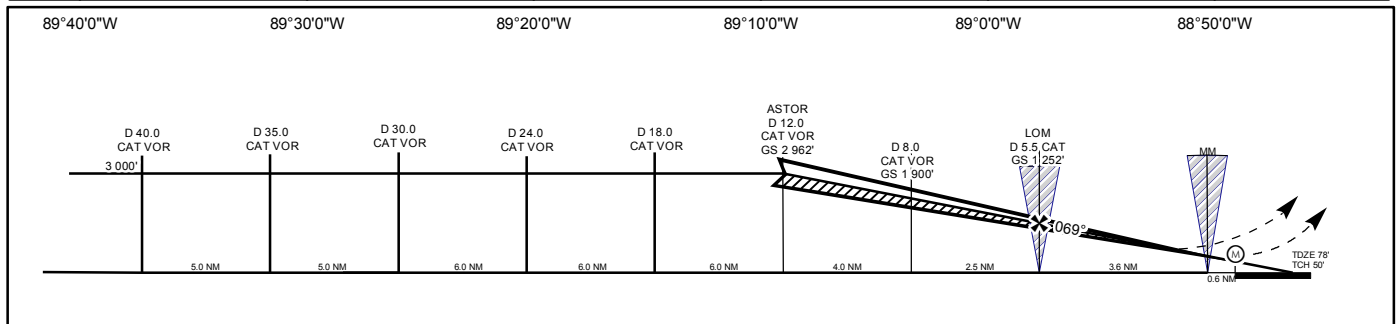
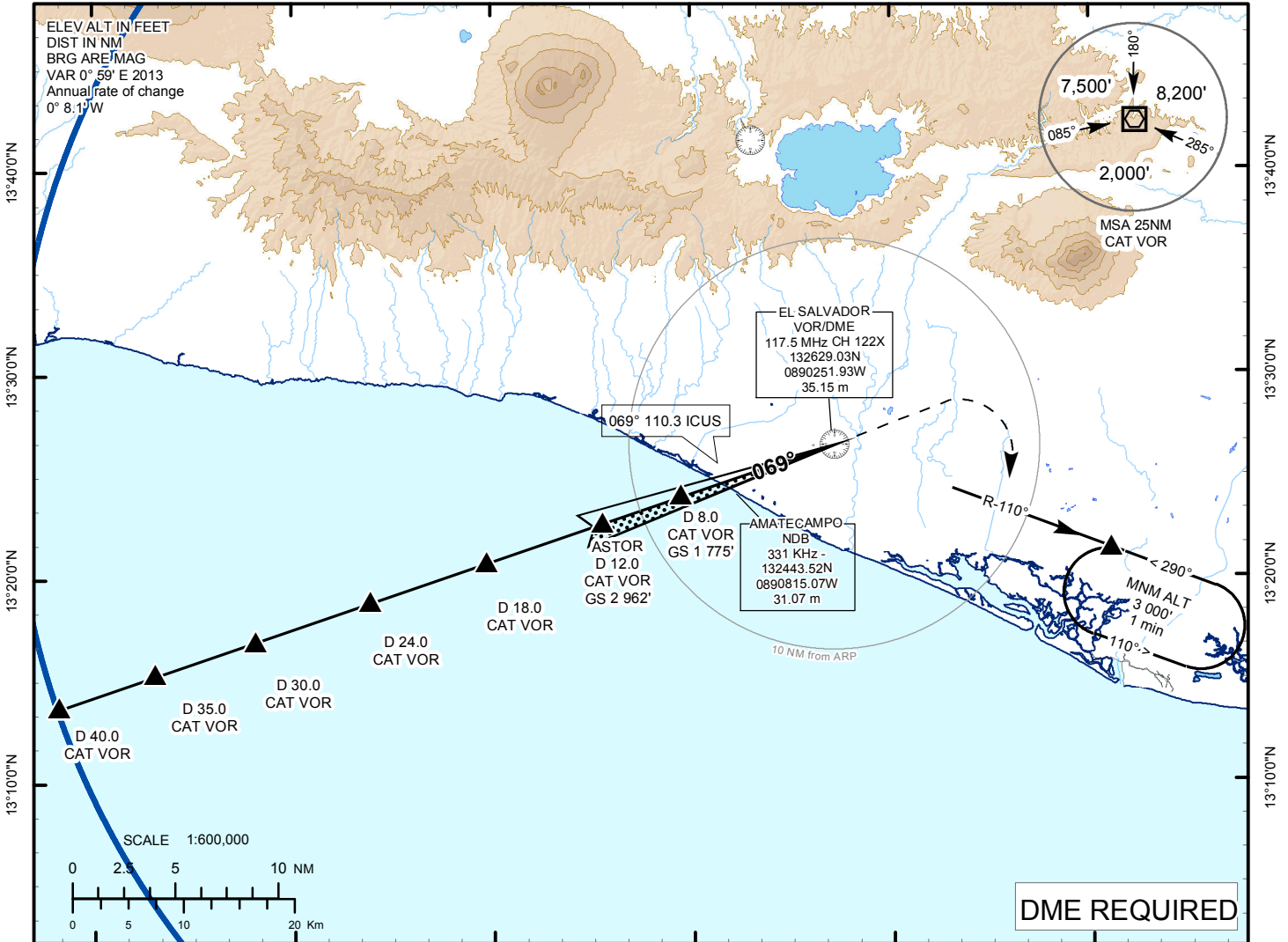
INSTRUMENT  
APPROACH  
CHART

AERODROME ELEV 101 ft.  
HEIGHTS RELATED TO  
TDZE RWY 07 ELEV 78 ft.

ATIS 127.6  
APP 119.9  
TWR 118.0

EL SALVADOR / EL SALVADOR INTL  
MONSEÑOR OSCAR ARNALFO ROMERO  
ILS Z RWY 07

89°40'0"W 89°30'0"W 89°20'0"W 89°10'0"W 89°0'0"W 88°50'0"W



Rate of Descend	GS (VELOCITY)	70	90	100	120	140	160	MISSED APCH: Climb on hdg 069° until reaching 500' then climbing right turn to 3 000' outbound via CAT VOR R-110 and hold at D15.0 or Request ATC instructions.		
	Ft/min GS 2.5°	315	405	450	539	629	719			
MAPT - THR	Min	NA	NA	NA	NA	NA	NA			
Straight in Approach	ILS DA(H)278' (200')			LOC (GS OUT) MDA (H) 340' (262')				MAX Kts	CIRCLE TO LAND	
	Ceiling - Visibility									
CAT	FULL	ALS OUT			ALS OUT					
A	200' - 800 m	200' - 1 200 m	300' - 800 m		300' - 1 600 m		90	MDA(H) 520' (419')	Ceiling - Visibility 500' - 1 600 m	
B							120	560' (459')		
C							140			600' (559')
D							165			

**INTENTIONALLY LEFT BLANK**