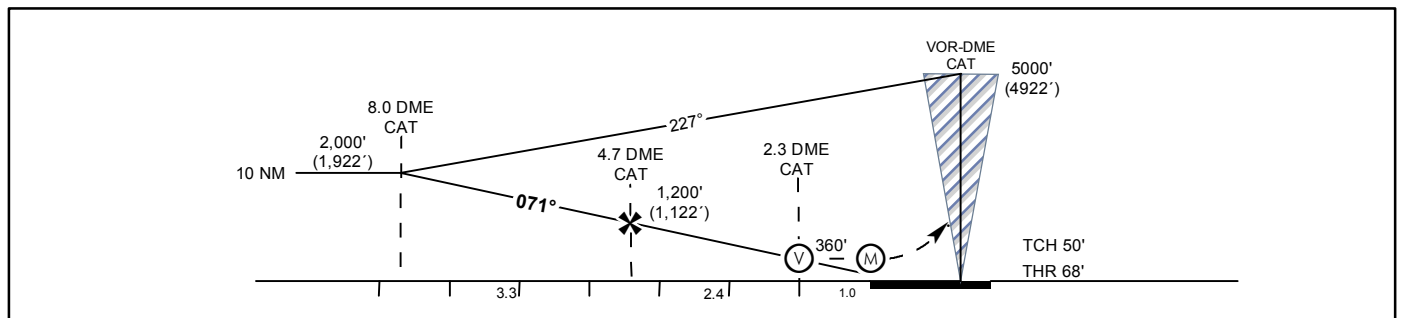
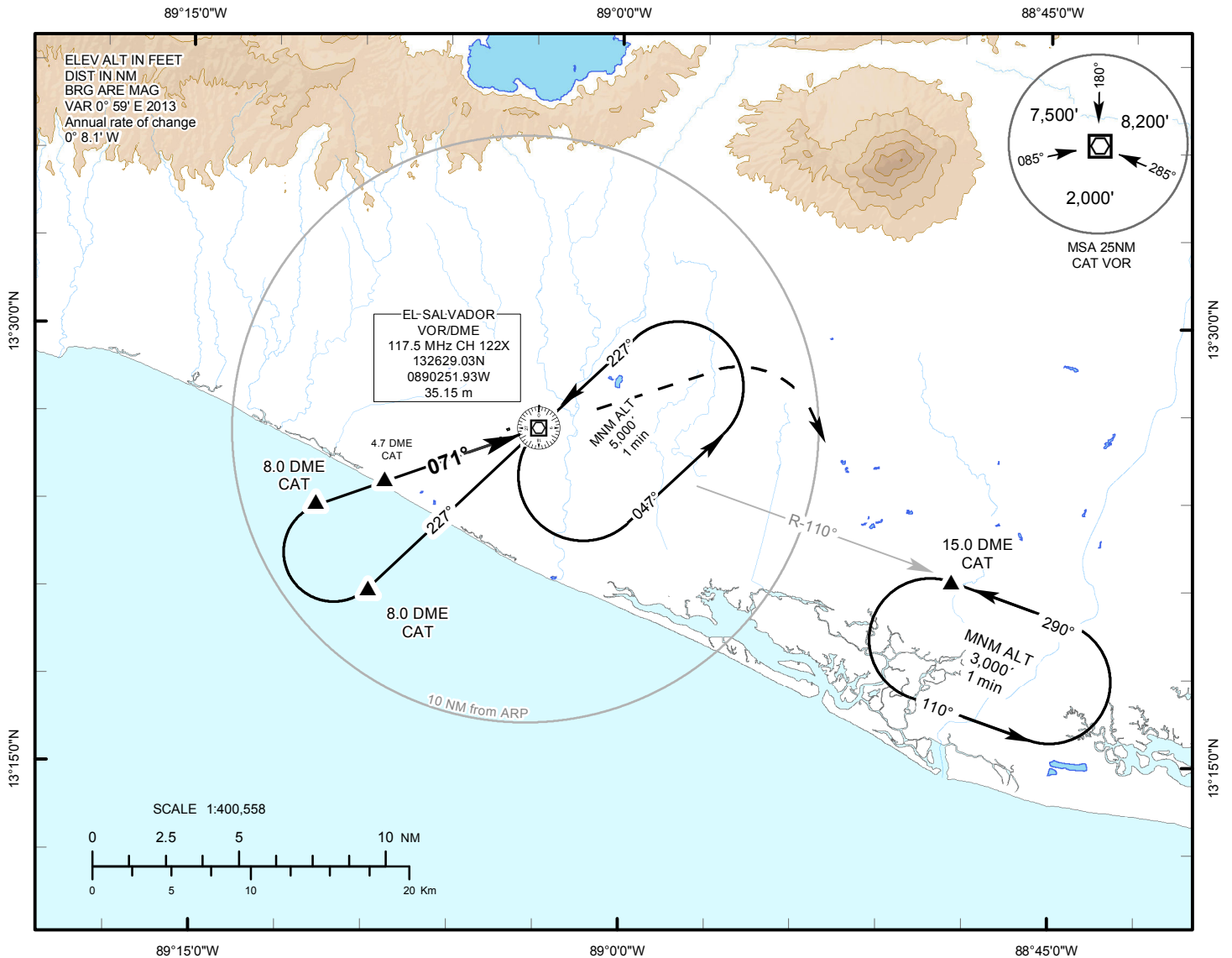


INSTRUMENT
APPROACH
CHART

AERODROME ELEV 101 ft.
HEIGHTS RELATED TO
THR RWY 07 ELEV 68 ft.

ATIS 127.6
APP 119.9
TWR 118.0

EL SALVADOR / EL SALVADOR INTL
MONSEÑOR OSCAR ARNULFO ROMERO
VOR/DME Y RWY 07



Rate of Descend	GS (VELOCITY)	70	90	100	120	140	166	MISSED APCH: Climb on hdg 071° until reaching 1 200' then climbing right turn to 3 000' outbound via CAT VOR R-110 and hold at D15.0 or Request ATC instructions.
	FAF-MAPT	4:01	3:07	2:49	2:21	2:00	1:42	
Straight in Approach MDA (H) 360'(282')								
CAT	Ceiling - Visibility	Ceiling - Visibility		MAX Kts	MDA(H)	Ceiling - Visibility		
A	300'-800m	300'-1 600m		90	520' (419')	500' - 1 600 m		
B				120				
C				140	560' (459')	500' - 2 400 m		
D	300'-1 600m			165	660' (559')	600' - 3 200 m		

CHANGES: NEW EDITION

WGS 84

INTENTIONALLY LEFT BLANK