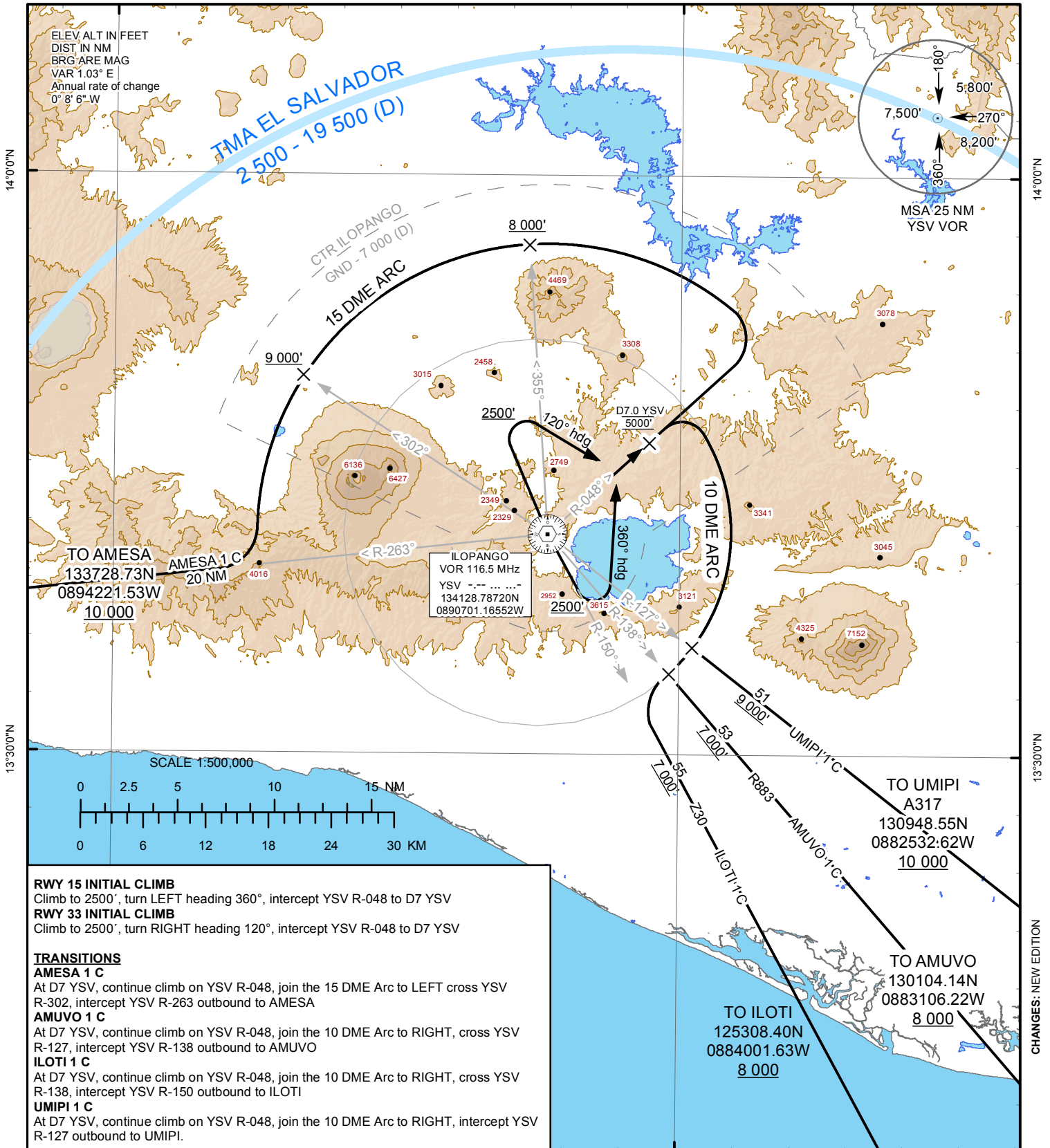


89°30'0"W

89°0'0"W



**RWY 15 INITIAL CLIMB**  
Climb to 2500', turn LEFT heading 360°, intercept YSV R-048 to D7 YSV

**RWY 33 INITIAL CLIMB**  
Climb to 2500', turn RIGHT heading 120°, intercept YSV R-048 to D7 YSV

**TRANSITIONS**

**AMESA 1 C**  
At D7 YSV, continue climb on YSV R-048, join the 15 DME Arc to LEFT cross YSV R-302, intercept YSV R-263 outbound to AMESA

**AMUVO 1 C**  
At D7 YSV, continue climb on YSV R-048, join the 10 DME Arc to RIGHT, cross YSV R-127, intercept YSV R-138 outbound to AMUVO

**ILOTI 1 C**  
At D7 YSV, continue climb on YSV R-048, join the 10 DME Arc to RIGHT, cross YSV R-138, intercept YSV R-150 outbound to ILOTI

**UMIPI 1 C**  
At D7 YSV, continue climb on YSV R-048, join the 10 DME Arc to RIGHT, intercept YSV R-127 outbound to UMIPI.

89°30'0"W

89°0'0"W

**INTENTIONALLY LEFT BLANK**